

Post-translocation monitoring photo record extracted from post-translocation report (December 2022)



Cleared riparian vegetation in the monitoring area



Hand netting at a potential habitat (vegetation) along the watercourse



Kick-netting to search for *S. zanklon*

B.1 Incense Tree *Aquilaria sinensis*



Photo B.1.1. : General view of the transplanted individual AS-03.



Photo B.1.2. : Leaf condition of the transplanted individual AS-03.



Photo B.1.3. : General view of the transplanted individual AS-02.

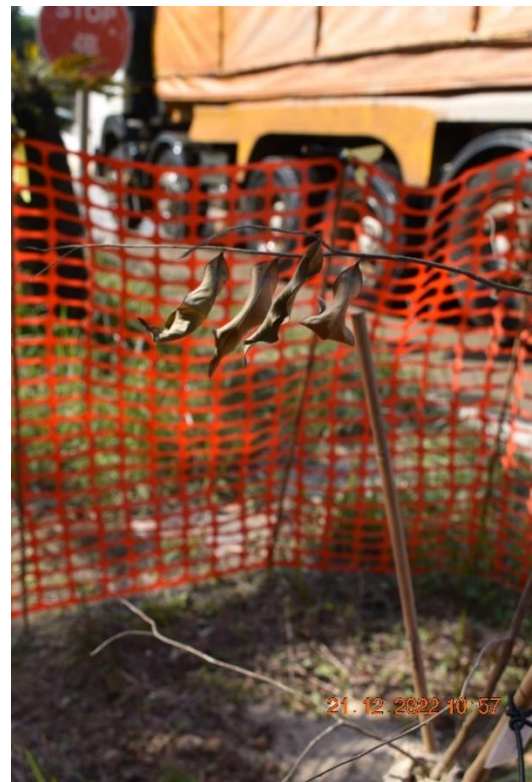


Photo B.1.4. : Leaf condition of the transplanted individual AS-02.

B.2 Lamb of Tartary *Cibotium barometz*



Photo B.2.1. : General view of the transplanted individual CB-01.



Photo B.2.2. : Leaf condition of the transplanted individual CB-01.



Photo B.2.3. : Stem condition of the transplanted individual CB-01.



Photo B.2.4. : Leaf condition of the transplanted individual CB-01.

B.3 Bottlebrush Orchid *Goodyera procera*



Photo B.3.1: Individual GP-01. Partially wilted leaf.



Photo B.3.2: Individual GP-01. Partially wilted leaf.



Photo B.3.3: Individual GP-02. Wilted leaf.



Photo B.3.4: Individual GP-03. Perforated leaves.



Photo B.3.5: Individual GP-03. Perforated leaves.



Photo B.3.6: Individual GP-04. Wilted leaf.



Photo B.3.7: Individual GP-04. Wilted leaf.



Photo B.3.8: Individual GP-05. Partially wilted leaf.



Photo B.3.9: Individual GP-06. Partially wilted leaf.



Photo B.3.10: Individual GP-06. Partially chlorotic and wilted leaf.



Photo B.3.11: Individual GP-07.

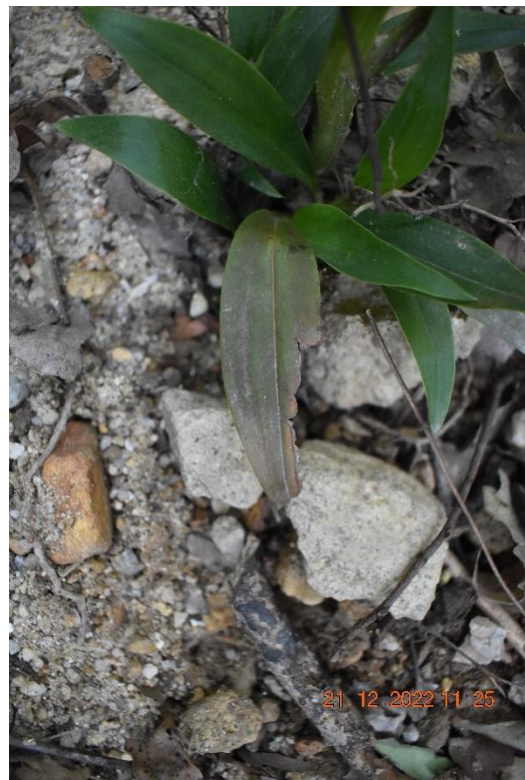


Photo B.3.12: Individual GP-07. Single chlorotic leaf.



Photo B.3.13: Individual GP-08. Minor chlorotic leaves.

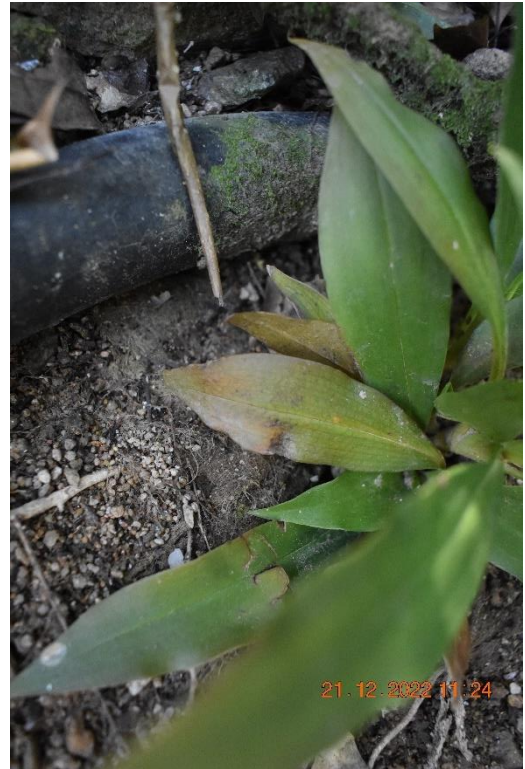


Photo B.3.14: Individual GP-08. Minor chlorotic leaves.



Photo B.3.15: Individual GP-09.



Photo B.3.16: Individual GP-10. Holes in leaves.



Photo B.3.17: Individual GP-11. Partially wilted leaves.



Photo B.3.18: Individual GP-12. Perforated leaves.



Photo B.3.19: Individual GP-13.



Photo B.3.20: Individual GP-14. Chlorotic leaves.



Photo B.3.21: Individual GP-15. Partially chlorotic leaves.



Photo B.3.22: Individual GP-16.



Photo B.3.23: Individual GP-17. Partially wilted leaf.



Photo B.3.24: Individual GP-18. Partially wilted leaves.



Photo B.3.25: Individual GP-19.



Photo B.3.26: Individual GP-19. Holes in leaves.

B.1 Incense Tree *Aquilaria sinensis*



Photo B.1.1 : General view of the transplanted individual AS-03.



Photo B.1.2 : Leaf condition of the transplanted individual AS-03.



Photo B.2.3 : General view of the transplanted individual AS-02.



Photo B.1.4 : Leaf condition of the transplanted individual AS-02.

B.2 Lamb of Tartary *Cibotium barometz*



Photo B.2.1: General view of the transplanted individual CB-01.



Photo B.2.2: Figure 2.2: Wilted leaves of the transplanted individual CB-01.



Photo B.2.3: Wilted leaves of the transplanted individual CB-01.

B.3 Bottlebrush Orchid *Goodyera procera*



Photo B.3.1: Individual GP-01. Partially wilted leaf.



Photo B.3.2: Individual GP-02. Chlorotic leaf.



Photo B.3.3: Individual GP-03.



Photo B.3.4: Individual GP-03. Perforated leaves.



Photo B.3.5: Individual GP-04. Wilted leaf.



Photo B.3.6: Individual GP-04. Wilted leaf.



Photo B.3.7: Individual GP-05. Partially wilted leaf.

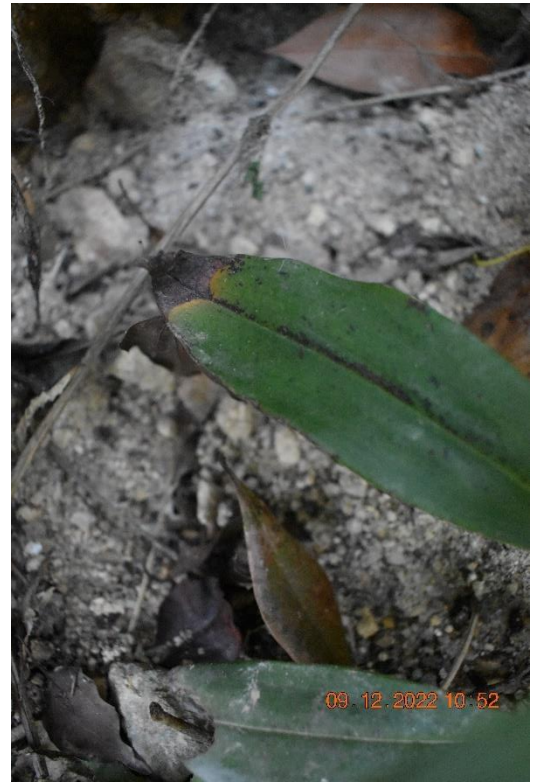


Photo B.3.8: Individual GP-05. Partially wilted leaf.



Photo B.3.9: Individual GP-06. Partially wilted leaf.

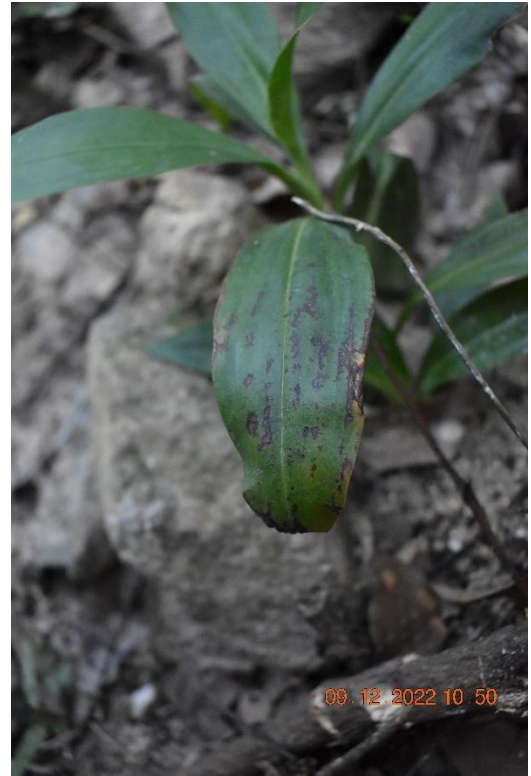


Photo B.3.10: Individual GP-06. Partially wilted leaf.



Photo B.3.11: Individual GP-07.



Photo B.3.12: Individual GP-07. Single chlorotic leaf.



Photo B.3.13: Individual GP-08. Holes in leaves.



Photo B.3.14: Individual GP-09. Holes in leaves.



Photo B.3.15: Individual GP-10. Holes in leaves.



Photo B.3.16: Individual GP-11. Partially wilted leaves.



Photo B.3.17: Individual GP-12. Perforated leaves.



Photo B.3.18: Individual GP-12. Perforated leaves.



Photo B.3.19: Individual GP-13.



Photo B.3.20: Individual GP-14. Chlorotic leaves.



Photo B.3.21: Individual GP-15.



Photo B.3.22: Individual GP-16.



Photo B.3.23: Individual GP-17.



Photo B.3.24: Individual GP-18.



Photo B.3.25: Individual GP-19.



Photo B.3.26: Individual GP-19. Partially wilted leaves.