



DO NOT SCALE DRAWING. CHECK ALL DIMENSIONS ON SITE.
 ALL RIGHTS RESERVED.
 © CHE ANIP & PARTNERS HONG KONG LIMITED.



updated to 8.2.2023

 completed chain link fencing
 $86/3055 = 3\%$

 completed footing
 $329/3055 = 11\%$



CO-ORDINATES FOR SITE BOUNDARY

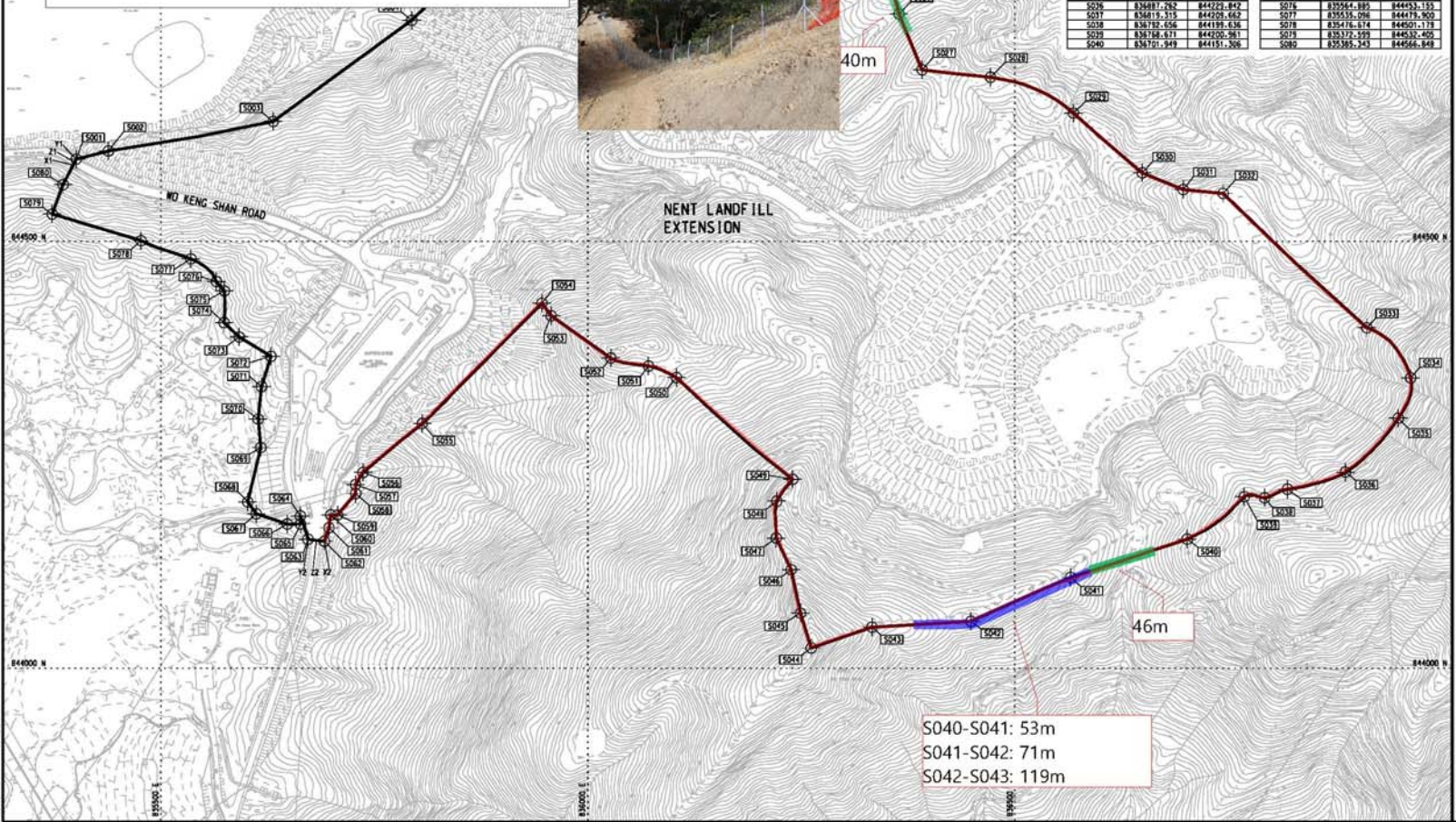
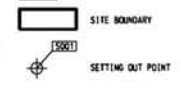
SETTING OUT POINT	EASTING	NORTHING
S001	835400.781	844536.483
S002	835438.429	844606.249
S003	835631.400	844641.074
S004	835733.647	844739.456
S005	835819.309	844833.170
S006	835936.645	844899.888
S007	835971.918	844941.831
S008	836072.263	845045.823
S009	836201.722	845091.072
S010	836373.201	845113.263
S011	836524.330	845102.135
S012	836582.016	845082.450
S013	836683.504	845045.440
S014	836808.244	845035.234
S015	836871.609	845003.991
S016	836848.485	844983.903
S017	836719.396	844961.955
S018	836211.083	844947.173
S019	836208.034	844923.217
S020	836254.713	844911.679
S021	836289.372	844882.150
S022	836312.248	844873.461
S023	836335.309	844846.516
S024	836339.365	844826.426
S025	836333.384	844805.700
S026	836384.427	844765.815
S027	836381.434	844701.456
S028	836411.540	844693.540
S029	836538.825	844652.135
S030	836649.132	844580.676
S031	836687.074	844561.038
S032	836744.096	844538.490
S033	836812.313	844599.086
S034	836863.685	844545.751
S035	836849.133	844531.092
S036	836887.782	844522.847
S037	836815.315	844525.453
S038	836732.456	844495.638
S039	836748.671	844500.961
S040	836701.349	844481.308

SETTING OUT POINT	EASTING	NORTHING
S041	836565.487	844476.308
S042	836448.643	844054.635
S043	836332.773	844048.000
S044	836281.205	844023.718
S045	836249.041	844004.518
S046	836238.083	844115.480
S047	836202.485	844132.508
S048	836221.116	844176.798
S049	836239.876	844271.358
S050	836153.689	844362.647
S051	836072.091	844354.088
S052	836026.843	844363.507
S053	835956.335	844413.156
S054	835946.240	844427.781
S055	835805.998	844286.810
S056	835736.615	844229.435
S057	835727.882	844215.110
S058	835728.112	844204.603
S059	835706.793	844179.573
S060	835696.903	844179.730
S061	835696.809	844164.637
S062	835691.369	844146.788
S063	835672.732	844153.163
S064	835663.311	844178.478
S065	835643.443	844165.997
S066	835649.028	844168.527
S067	835611.614	844181.018
S068	835601.744	844176.787
S069	835616.811	844258.637
S070	835613.886	844292.007
S071	835617.736	844332.081
S072	835628.687	844363.508
S073	835591.597	844388.318
S074	835573.889	844405.135
S075	835574.283	844442.333
S076	835564.889	844453.135
S077	835535.096	844476.903
S078	835476.614	844503.119
S079	835372.593	844532.405
S080	835385.243	844566.549

CO-ORDINATES FOR VEHICULAR ACCESS

SETTING OUT POINT	EASTING	NORTHING
11	835331.108	844599.614
11	835400.781	844596.681
21	835338.934	844533.147
22	835631.380	844446.788
22	835672.232	844511.183
22	835681.806	844449.963

LEGEND



S040-S041: 53m
 S041-S042: 71m
 S042-S043: 119m

Rev	Description	By	Date
0	ISSUE FOR TENDER	SE	12/20

ARUP 奧雅納工程顧問
 Che Anip & Partners Hong Kong Limited

Project No:
 Contract No. EP/SP/77/15
 North East New Territories
 Landfill Extension

Drawing title
**SETTING OUT DETAILS
 OF SITE BOUNDARY**

Drawing no.	215523/01/016	Rev.	0
Drawn BY	Date 06/20	Checked PW	Approved FW
Scale	1:2500 WA1	Station	TENDER



DATES
 Printed by : SUSEFS
 Filename : BFILES