

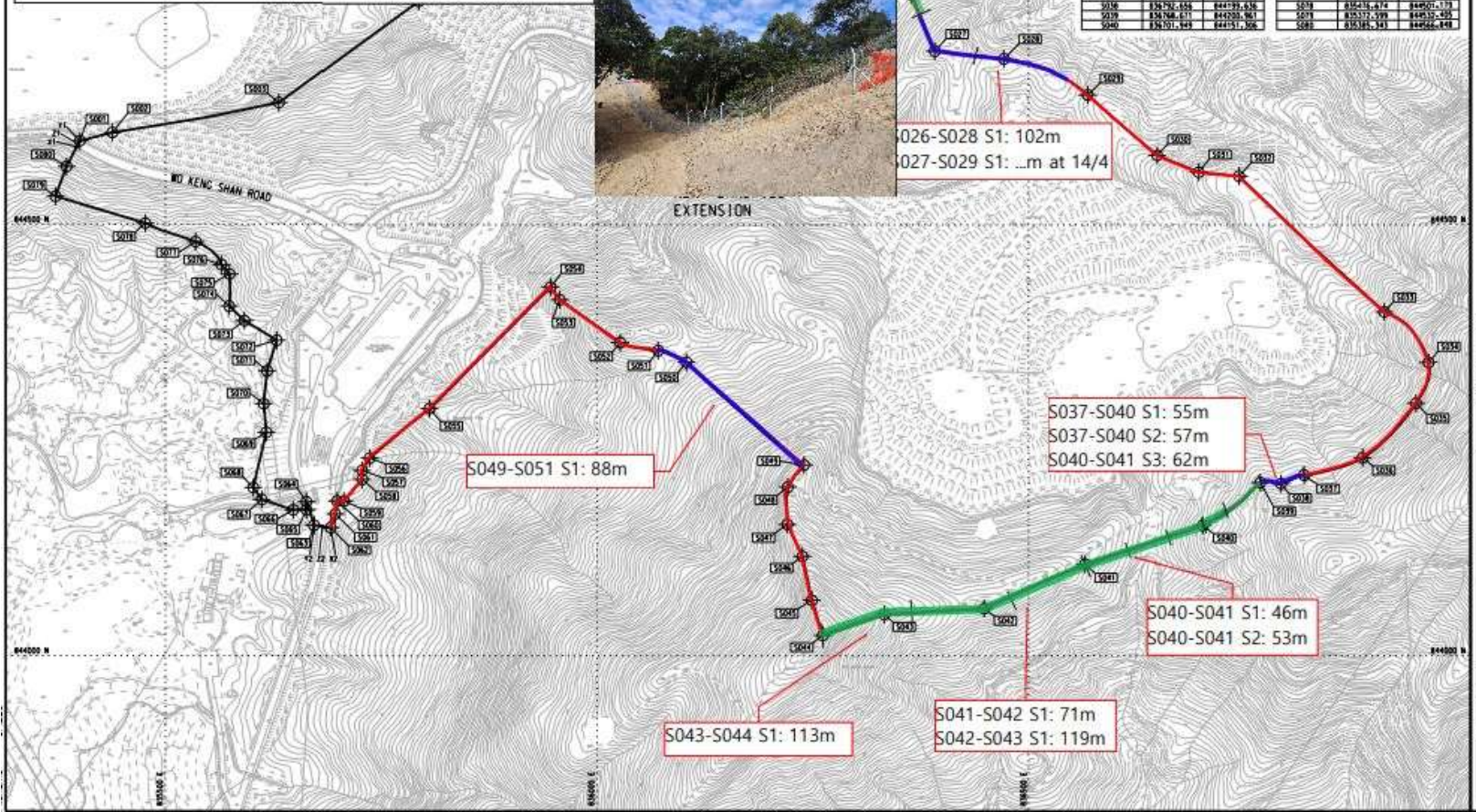
DO NOT SCALE DRAWING. CHECK ALL DIMENSIONS ON SITE.
ALL RIGHTS RESERVED.
© THE AEC & PARTNERS HONG KONG LIMITED.

SB Fencing Progress Report as @ 13.3.2023

Start Date: 11.1.2023

Legend

- Proposed fencing length = 3055 m
- Completed footing 1252/3055 m = 41%
- Completed chain link fence 1006/3055 m = 33%



CO-ORDINATES FOR SITE BOUNDARY

SETTING OUT POINT	EASTING	NORTHING	SETTING OUT POINT	EASTING	NORTHING
S001	835800.183	844906.681	S041	836268.887	844906.358
S002	835236.425	844626.249	S042	836448.643	844906.836
S003	835631.468	844641.024	S043	836332.773	844906.000
S004	835733.641	844755.086	S044	836265.938	844907.118
S005	835875.993	844839.110	S045	836249.041	844906.518
S006	835936.645	844898.988	S046	836218.383	844911.482
S007	835717.578	844943.833	S047	836252.666	844912.528
S008	836012.033	845048.603	S048	836211.176	844916.388
S009	836021.222	845021.012	S049	836233.876	844921.228
S010	836012.200	845015.203	S050	836103.697	844934.647
S011	836026.335	845025.135	S051	836025.891	844938.089
S012	836025.016	845027.450	S052	836025.843	844935.527
S013	836003.084	845024.440	S053	836006.235	844935.708
S014	836006.744	845026.234	S054	836006.240	844935.734
S015	836121.889	845023.591	S055	836002.938	844936.112
S016	836135.485	844985.801	S056	836136.615	844928.425
S017	836175.296	844976.950	S057	836173.882	844918.130
S018	836211.023	844947.723	S058	836178.112	844924.403
S019	836236.814	844925.211	S059	836106.253	844916.372
S020	836254.173	844912.615	S060	836006.903	844915.136
S021	836285.337	844882.150	S061	836006.825	844916.537
S022	836312.248	844910.467	S062	836006.841	844916.382
S023	836315.305	844916.718	S063	836006.232	844915.383
S024	836359.385	844876.426	S064	836006.311	844918.478
S025	836353.384	844895.700	S065	836006.841	844916.392
S026	836366.673	844796.615	S066	836006.026	844916.397
S027	836391.434	844701.466	S067	836006.614	844918.678
S028	836411.248	844697.580	S068	836006.742	844916.387
S029	836468.673	844656.710	S069	836006.811	844916.387
S030	836495.132	844580.636	S070	836006.806	844916.507
S031	836497.274	844561.038	S071	836006.736	844916.581
S032	836746.096	844556.492	S072	836006.826	844916.508
S033	836812.313	844398.086	S073	836006.937	844916.318
S034	836865.885	844345.637	S074	836006.889	844906.735
S035	836926.113	844276.092	S075	836006.914	844916.392
S036	836887.282	844228.642	S076	836006.895	844905.135
S037	836816.335	844209.642	S077	836006.926	844916.380
S038	836736.656	844179.636	S078	836006.814	844905.173
S039	836746.611	844203.961	S079	836006.938	844916.435
S040	836707.649	844151.308	S080	836006.841	844926.448

CO-ORDINATES FOR VEHICULAR ACCESS

SETTING OUT POINT	EASTING	NORTHING
V1	835971.328	844906.614
V2	835906.761	844906.681
V3	835978.934	844935.147
V4	836017.382	844748.782
V5	836012.232	844915.163
V6	836081.806	844926.561

LEGEND

- SITE BOUNDARY
- SETTING OUT POINT

0	ISSUE FOR TENDER	SS	12/20
---	------------------	----	-------

Rev.	Description	By	Date
Consultant			
ARUP 奧雅納工程顧問 One Arup & Partners Hong Kong Limited			

Project title
Contract No. EP/SP/77/15
North East New Territories
Landfill Extension

Drawing title SETTING OUT DETAILS OF SITE BOUNDARY

Drawing No.	215523/01/016	Rev.	0
Drawn by	Tsui	Checked by	Approved by
Date	08/20	Status	TENDER
Scale	1:2500 (as)		

