

B.1 Incense Tree *Aquilaria sinensis*



Photo B.1.1 : General view of the transplanted individual AS-03.



Photo B.1.2 : Stem condition of the transplanted individual AS-03.



Photo B.1.3 : General view of the transplanted individual AS-02.

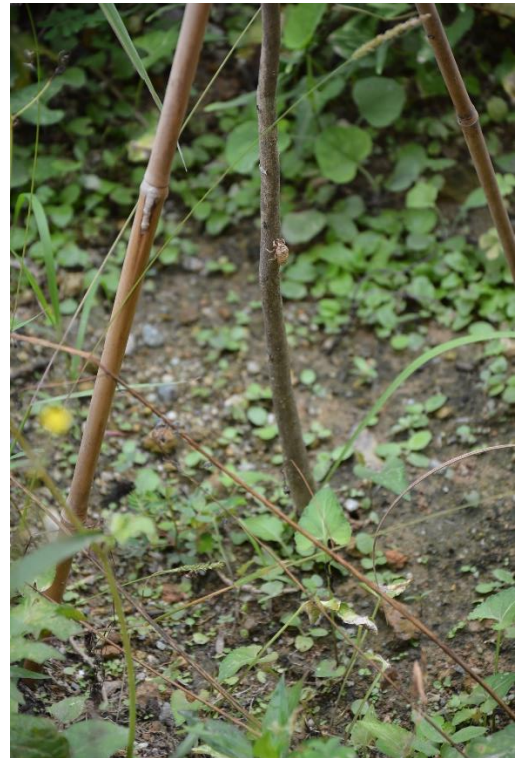


Photo B.1.4 : Stem condition of the transplanted individual AS-02.

B.2 Lamb of Tartary *Cibotium barometz*



Photo B.2.1 : General view of the transplanted individual CB-01.



Photo B.2.2 : New foliage of the transplanted individual CB-01.



Photo B.2.3 : Leaf condition of the new foliage.



Photo B.2.4 : General view of the transplanted individual CB-01.

B.3 Bottlebrush Orchid *Goodyera procera*



Photo B.3.1: Individual GP-01. Flower withering.



Photo B.3.2: Individual GP-02.



Photo B.3.3: Individual GP-03.

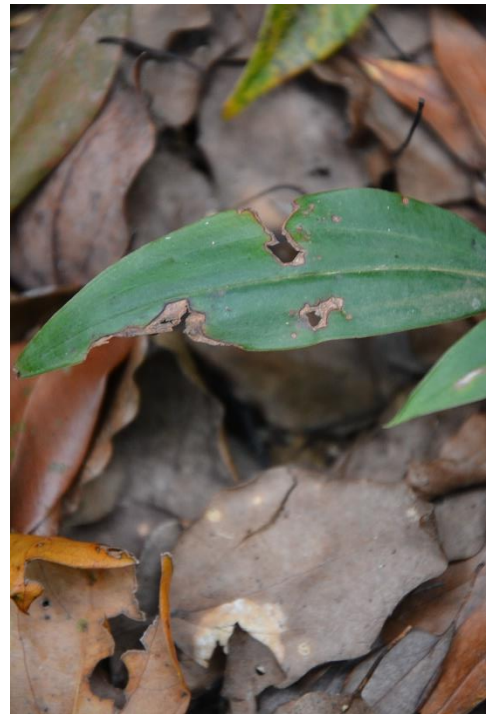


Photo B.3.4: Individual GP-03. Holes in leaves.



Photo B.3.5: Individual GP-04.



Photo B.3.6: Individual GP-04. Wilted flower.



Photo B.3.7: Individual GP-05.



Photo B.3.8: Individual GP-05. Wilted flower.



Photo B.3.9: Individual GP-06.



Photo B.3.10: Individual GP-06. Wilted flower.



Photo B.3.11: Individual GP-07.

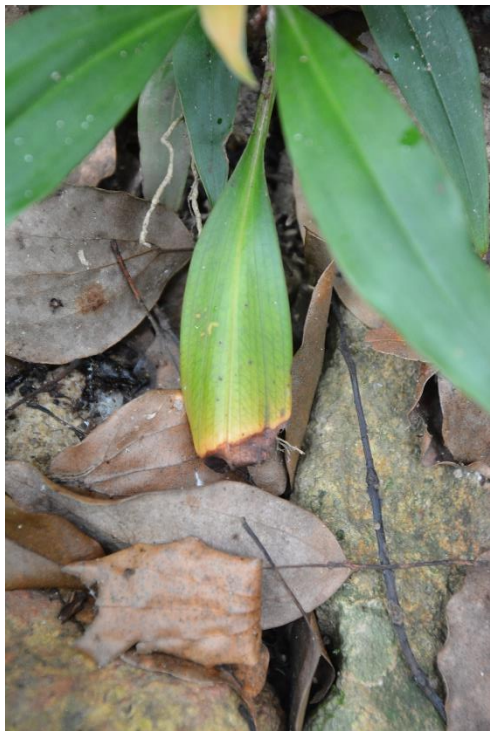


Photo B.3.12: Individual GP-07. Partially wilted leaf.



Photo B.3.13: Individual GP-08.

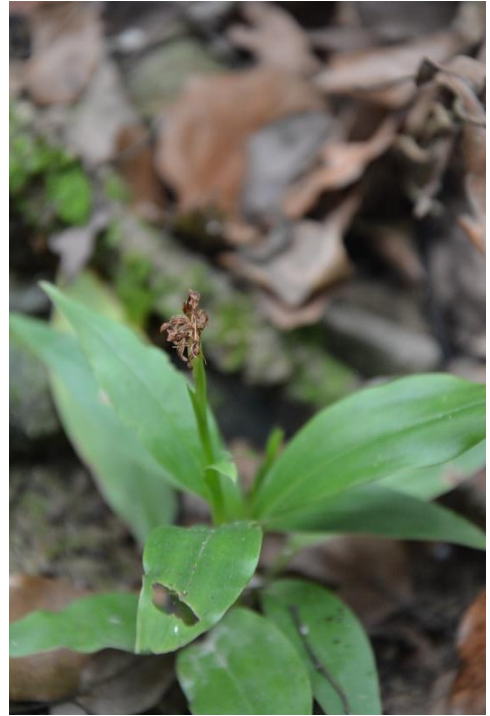


Photo B.3.14: Individual GP-08. Wilted flower.



Photo B.3.15: Individual GP-09. Wilting flower.



Photo B.3.16: Individual GP-10. Wilted flower.



Photo B.3.17: Individual GP-11. Flowering.



Photo B.3.18: Individual GP-11. Wilted flower.



Photo B.3.19: Individual GP-12.



Photo B.3.20: Individual GP-13.



Photo B.3.21: Individual GP-14.



Photo B.3.22: Individual GP-14. Wilted flower.



Photo B.3.23: Individual GP-15.



Photo B.3.24: Individual GP-15. Partially wilted leaves.



Photo B.3.25: Individual GP-16.



Photo B.3.26: Individual GP-16. Wilted flower.



Photo B.3.27: Individual GP-17.



Photo B.3.28: Individual GP-18.



Photo B.3.29: Individual GP-18. Wilted flower.



Photo B.3.30: Individual GP-19. Flowering.



Photo B.3.31: Individual GP-19. Wilted flower.