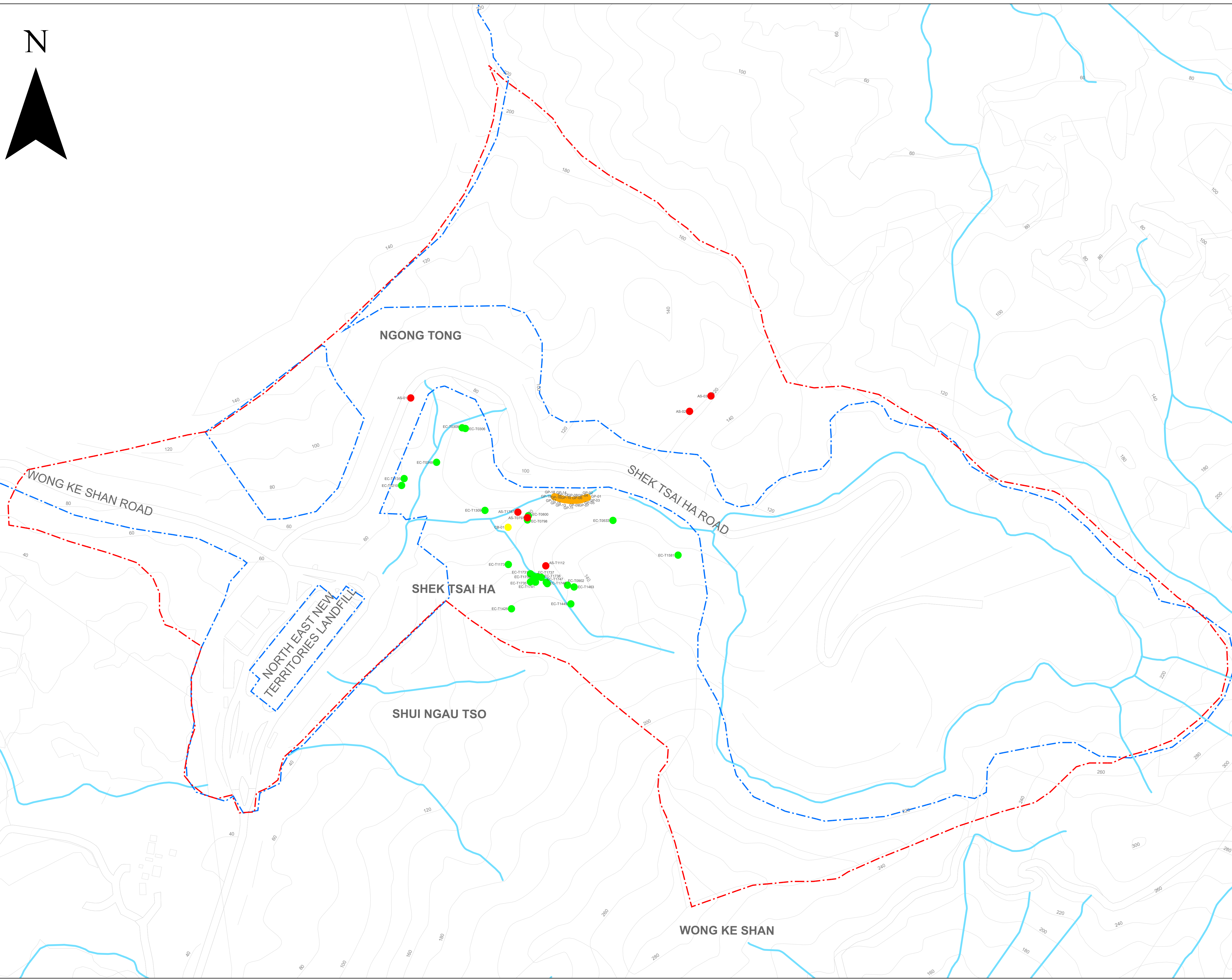
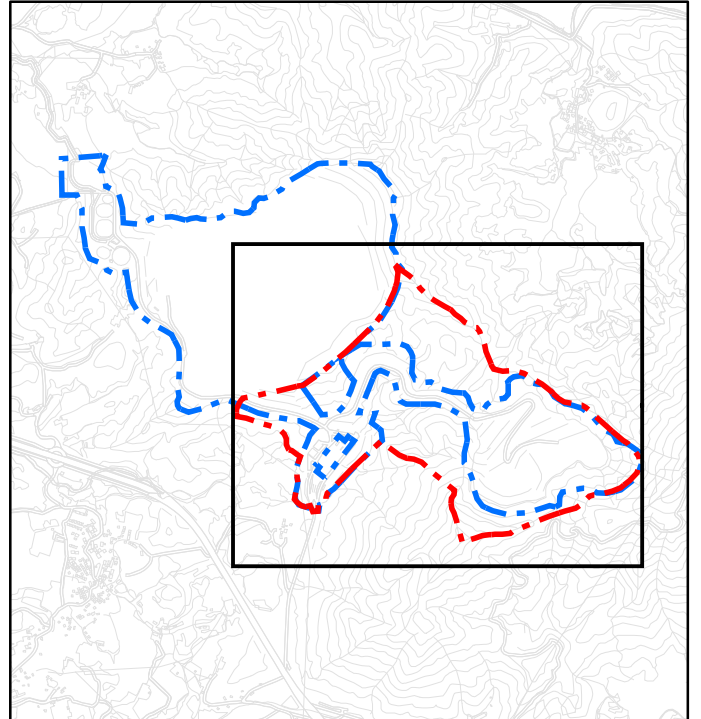


- Legend**
- Aquilaria sinensis (AS)
 - Cibotium barometz (CB)
 - Endospermum chinense (EC)
 - Goodyera procera (GP)
 - Existing NENT Landfill
 - NENT Landfill Extension (NENTX)
 - Hydrographic features

Key Plan



No.	Date	Description	Designed	Checked
		Name	Date	
Drawn		SMR	10 AUG 2022	
Checked		FMN	10 AUG 2022	
Project No.		0092-22		
Project Title				
NORTHEAST NEW TERRITORIES LANDFILL EXTENSION (NENTX)				
Figure title				
LOCATION OF SPECIES WITH CONSERVATION IMPORTANCE				
Drawing No.	Revision	Scale		
0092-22/002		0 12.5 25 50 Meters		
Client				
VEOLIA VEOLIA ENVIRONMENTAL SERVICES HONG KONG LTD.				
Environmental Team				
aurecon AURECON HONG KONG LTD.				
Sub-consultant				
FUGRO FUGRO TECHNICAL SERVICES LIMITED				