




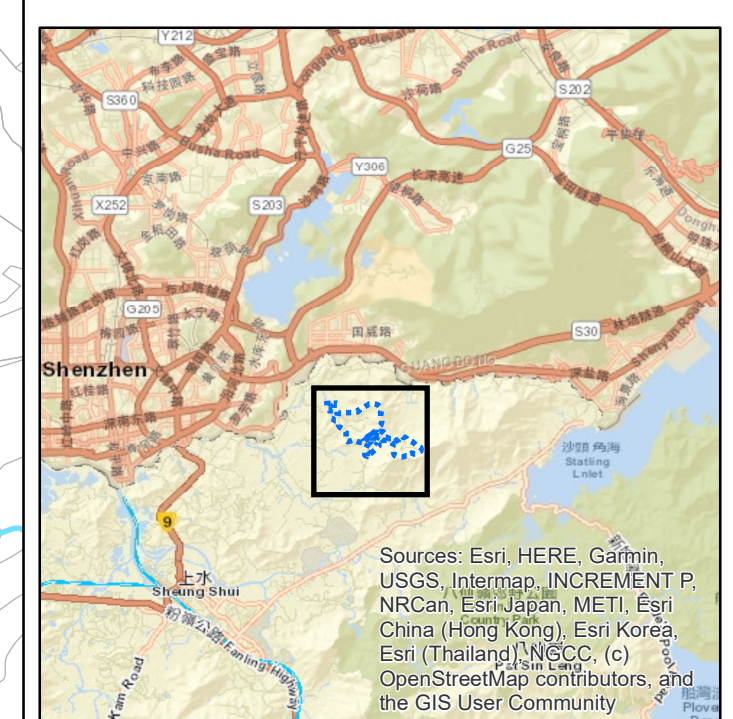


- Legend**
-  Recipient Site for *Cibotium barometz* and *Goodyera procera*
 -  Recipient Site for *Aquilaria sinensis*
 -  NENT Landfill Extension (NENTX)
 -  Existing NENT Landfill
 -  Hydrographic features

Location Plan

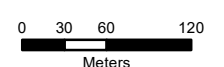


No.	Date	Description	Designed	Checked
		Name		Date
Drawn		SMR		21 JUN 2022
Checked		FMN		21 JUN 2022

Project No. 0092-22

Project Title
NORTHEAST NEW TERRITORIES LANDFILL EXTENSION (NENTX)

Figure title
SURVEYED LOCATION FOR POTENTIAL RECIPIENT SITE

Drawing No.	Revision	Scale
0092-22/001		

Client
VEOLIA
VEOLIA ENVIRONMENTAL SERVICES HONG KONG LTD.

Environmental Team
aurecon
AURECON HONG KONG LTD.

Sub-consultant
FUGRO
FUGRO TECHNICAL SERVICES LIMITED

B.2 Receptor Sites



Plate 1: Incense Tree *Aquilaria sinensis*



Plate 2: Lamb of Tartary *Cibotium barometz*



Plate 3: Bottlebrush Orchid *Goodyera procera*



Plate 4: Bottlebrush Orchid *Goodyera procera*

B.3 Preparation of the Receptor Sites



Plate 5: Preparation of planting pit for Incense Tree



Plate 6: Planting pit for Incense Tree



Plate 7: Site clearance for Lamb of Tartary



Plate 8: Site clearance for Bottlebrush Orchids